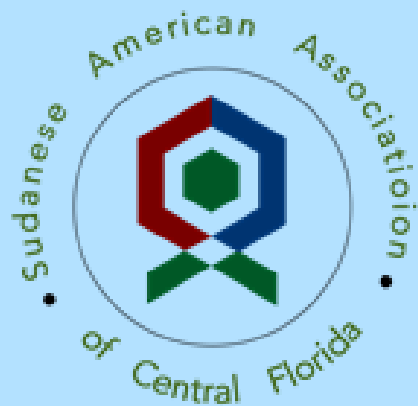




Workshop: Voter's Guide for the 2020 Election



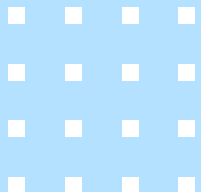
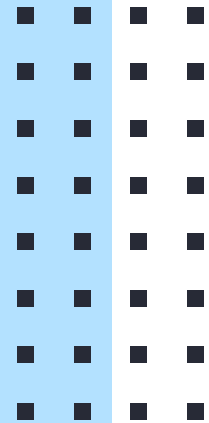
Shahd Mohamed





Overview

- **Introduction**
- **Plan Your Vote**
 - **Common Mistakes to Avoid**
- **Know Your Rights**
- **Other Ways to be Politically Engaged**





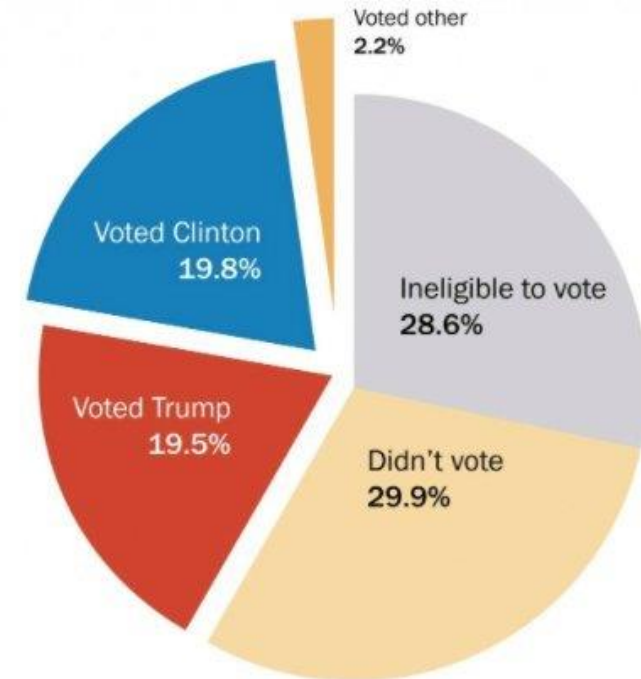
Introduction

Introduction

- Your vote is powerful
 - Community
- Presidential and local
- ~30% eligible but did not vote in 2016

How America participated in the election

Data from U.S. Election Project, Dave Wasserman, Census Bureau.



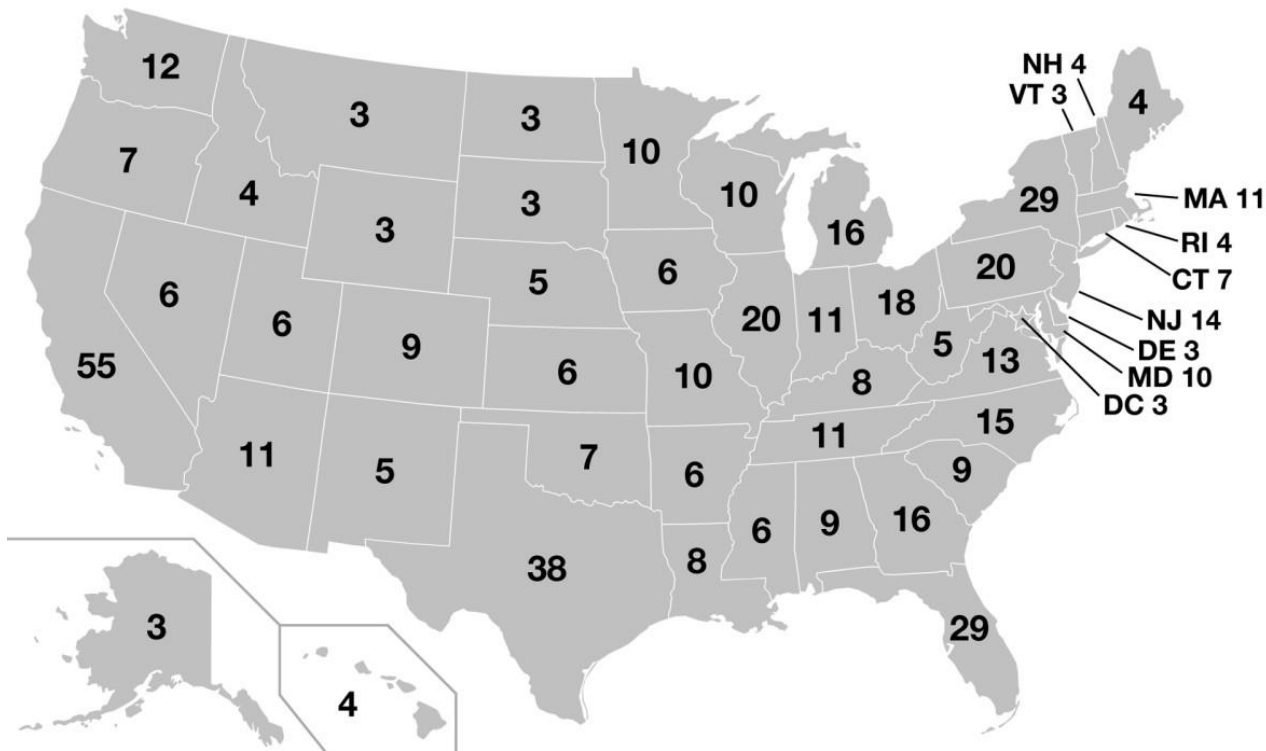
(The Washington Post)

Youth Vote

- Youth vote is important!
 - <50% of Americans 18 to 29 voted in the 2016 presidential election
- Voting is a habit
 - Start early



Florida



- Swing state
- President's path to the election
 - 270/538
electorates

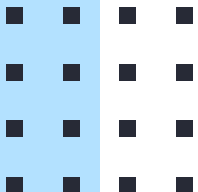


Plan Your Vote



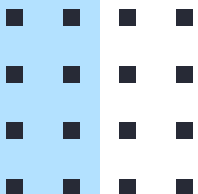
Plan Your Vote

- Where? When? How?
- 3 ways to vote:
 - Vote by Mail or Absentee
 - Early Voting
 - Vote on Election Day



Before You Vote

- Register to vote
 - <https://registertovoteflorida.gov/home>
 - 29 days before election
- Closed primary
- Understand what is on your ballot
 - <https://www.ocfelections.com/whats-my-ballot>
- Mark your sample ballot
 - Be informed of choices
 - Internet
 - Voting guides





Amendment 2 – Raising Florida’s Minimum Wage

Brief Summary: Raises minimum wage to \$10 per hour effective September 30th, 2021. Each September 30th thereafter, minimum wage shall increase by \$1 per hour until the minimum wage reaches \$15 per hour on September 30th, 2026. From that point forward, future minimum wage increases shall revert to being adjusted annually for inflation starting September 30th, 2027.



Yes – For the Measure



No – Against the Measure

Biographical Information

A Yes Vote Would... –Allow minimum wage workers in Florida to earn enough to afford basic household necessities including housing, food, transportation, child care and health care. –Help to reduce race and gender income inequality –Potentially increase economic activity by increasing household spending Require small and large business owners to budget for increased payroll expenses –Have little or no detrimental effect on job growth partly due to higher demand for goods and services generated by higher wage earners, and lower employer costs from less employee turnover, according to recent studies

A No Vote Would... –Allow businesses to keep labor costs at current levels –Avoid potential labor cost impacts on the prices of consumer goods –Maintain low-paying positions for teenagers and young adults joining the labor market –Likely continue a wage structure that can lead to poverty among younger workers, women and minorities

Select this Candidate

Select this Candidate



Our Mission: **Ensure** the integrity of the electoral process. **Enhance** public confidence. **Encourage** citizen participation.

[Track your vote-by-mail ballot!](#)

[View Sample Ballots / Polling Places](#) • [View Early Voting Locations](#)



Orange County
Supervisor of Elections
Bill Cowles

VOTE



Check My Info



Find My Polling Place



Request a Vote-by-Mail Ballot



What's On My Ballot?

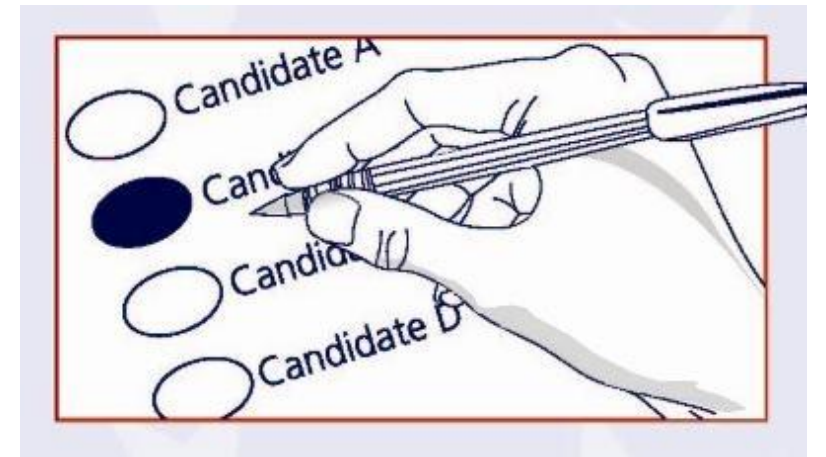
Vote by Mail

- Vote safely at home
- Request your vote-by-mail ballot:
 - Deadline: Saturday, October 24th by 5:00 pm
 - Online: <https://www.ocfelections.com/vote-by-mail>
 - Phone: (407) 836 - 8683
 - Alternatives: Fax, Mail, Email



Vote by Mail

- Steps/Checklist:
 - ❑ Open vote by mail packet and read ALL instructions
 - ❑ Mark your ballot(s)
 - ❑ Fill in the oval next to your choice completely with BLACK ballpoint pen
 - ❑ If you make a mistake, ask for a new ballot. Do not cross out or your vote may not count.



Vote by Mail

- Steps/Checklist:
 - After marking your ballot, refold it and place it inside the secrecy sleeve
 - Place ballot into white official election mail envelope
 - **Sign and date voter's certificate on the back**
 - Optional: provide email, cell phone number



Common Mistakes

- Ballot not marked correctly with black, ballpoint pen
- Missing signature or signature mismatch*
 - Must match the one on record
- Missing date
- Envelope isn't sealed
- Two or more ballots are included in an envelope
- Returned past the deadline

Vote by Mail

- Ballot must be received by Supervisors of Elections Office by ***7:00 pm*** on election day (Tuesday, November 3rd, 2020)
- How to return:
 - By Mail
 - No later than 5 days before election
 - Date of postmark doesn't matter
 - In person at an official dropbox
 - Drive thru at 130 W Kaley Street, Orlando, FL 32806
 - Available at Early Voting Sites
 - <https://ocfelections.com/vbmdropoff>
 - Exchange at polling location

Vote by Mail

- Track your vote-by-mail ballot
 - <https://www.ocfelections.com/track-my-vote-mail-ballot>
 - Example:

2020 GENERAL ELECTION	
STATUS	DATE
RECEIVED	10/6/2020
Accepted - Ballot will be counted	
Mail	9/30/2020
Sent via Mail to ORLANDO FL 32836	
REQUESTED	6/1/2020

Early Voting

- In person
- Monday, October 19, 2020 –
Sunday, November 1, 2020
 - 8:00 am – 8:00 pm
- Website:
<https://ocfelections.com/early-voting-locations>

ALAFAYA BRANCH LIBRARY 12000 E COLONIAL DR ORLANDO FL 32826	AMWAY CENTER - DISNEY ATRIUM 400 W. CHURCH ST. #200 ORLANDO FL 32801	APOPKA COMMUNITY CENTER 519 S CENTRAL AVE APOPKA FL 32703	CHICKASAW BRANCH LIBRARY 870 N CHICKASAW TRL ORLANDO FL 32825	FAIRVIEW SHORES LIBRARY 902 LEE RD SUITE 26 ORLANDO FL 32810
HIAWASSEE BRANCH LIBRARY 7391 W COLONIAL DR ORLANDO FL 32818	MARKS STREET SENIOR RECREATION COMPLEX 99 E MARKS ST ORLANDO FL 32803	MEADOW WOODS RECREATION CENTER 1751 RHODE ISLAND WOODS CIR ORLANDO FL 32824	ORANGE COUNTY SUPERVISOR OF ELECTIONS 119 W KALEY ST ORLANDO FL 32806	RENAISSANCE SENIOR CENTER 3800 S ECONLOCKHATCHEE TRL ORLANDO FL 32829
SOUTH CREEK BRANCH LIBRARY 1702 DEERFIELD BLVD ORLANDO FL 32837	SOUTHEAST BRANCH LIBRARY 5575 S SEMORAN BLVD ORLANDO FL 32822	SOUTHWEST BRANCH LIBRARY 7255 DELLA DR ORLANDO FL 32819	TIBET-BUTLER PRESERVE 8777 COUNTY RD 535 WINTER GARDEN FL 32836	UCF: THE GARDEN ROOM AT LIVE OAK EVENT CENTER 4115 PYXIS LANE ORLANDO FL 32816
WASHINGTON PARK BRANCH LIBRARY 5151 RALEIGH ST ORLANDO FL 32811	WATER CONSERV II DISTRIBUTION CENTER 17498 MCKINNEY RD WINTER GARDEN FL 34787	WEST OAKS BRANCH LIBRARY 1821 E SILVER STAR RD OCOEE FL 34761	WINTER GARDEN BRANCH LIBRARY 805 E. PLANT ST. WINTER GARDEN FL 34787	WINTER PARK LIBRARY 460 E NEW ENGLAND AVE WINTER PARK FL 32789

Website: <https://ocfelections.com/early-voting-locations>

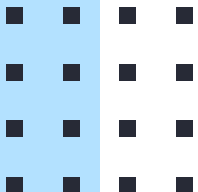
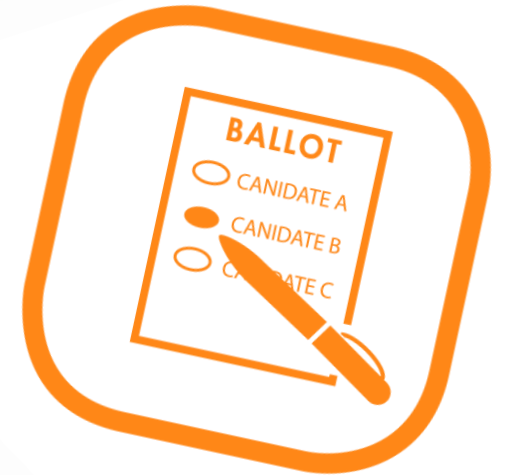
Vote on Election Day

- Tuesday, November 3rd, 2020
 - 7:00 am – 7:00 pm
- Last chance to vote
- Precinct
 - <https://www.ocfelections.com/find-my-polling-place>



Vote on Election Day

- Be prepared for long lines
- What to bring to the polls
 - Photo and Signature ID
 - Florida Driver's License or Identification Card
 - Passport
 - Sample ballot
 - Mask
 - Black, ballpoint pen



Summary – Ways to Vote

- Vote by Mail
- Early Voting
- Vote on Election Day



<https://www.youtube.com/watch?v=weM6XRPfowg>



Know Your Rights

Know Your Rights

- If the polls close while you're still in line, stay in line
 - Nov 3rd, 2020 – 7:00 am to 7:00 pm
- If you make a mistake on your ballot, ask for a new one
- You have the right to receive in-person help at the polls from the person of your choice
- Voter intimidation is a federal crime

Know Your Rights

- Voters are entitled to a provisional ballot if their identity or registration is in question
- If you run into any problems or have questions on Election Day call:
 - Orange County Supervisors of Elections
 - 407-836-2070
 - Election Protection Hotline
 - English: 1-866-OUR-VOTE / 1-866-687-8683
 - Arabic: 1-844-YALLA-US / 1-844-925-5287



Other Ways to be Politically Engaged

Other Ways to be Politically Engaged

- Be informed
- Pre-register to vote
 - <https://registertovoteflorida.gov/home>
- Encourage family and friends to make a voting plan
 - Post on social media

Other Ways to be Politically Engaged

- Volunteer for a candidate's campaign
 - Phone bank
 - Door to door
- Poll worker



Conclusion

- **Your vote matters!**
- **Do you have a voting plan?**
 - **Where?**
 - **When?**
 - **How?**

